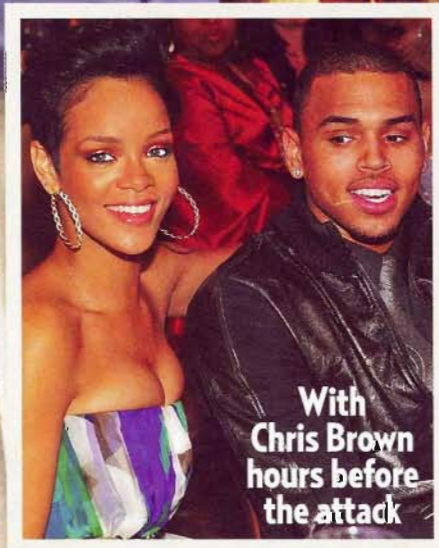


**RIHANNA  
IN HOSPITAL**

# FEAR & ABUSE

**HER DREAM LOVE  
TURNS TRAGIC**

- Beaten, bitten, left on a road & 'in shock': What happened
- Chris accused her of cheating
- She'd had suspicious bruises before



With Chris Brown hours before the attack

## Octo Mom Mystery

What she's hiding  
Did Angelina inspire her?



## Jessica's Meltdown

Onstage tears  
Tony's cruel breakup threats



"She's not happy," an insider says of Simpson (on Feb. 4 in Dallas). "She just wants to marry Tony and have kids."

Is he just not that into her? Bursting into tears on stage and using food to numb her pain, **Simpson** struggles with **Tony Romo's** hot-and-cold affections

BY KEVIN O'LEARY

# Jessica's Mel

**F**ROM THE VERY first song in Jessica Simpson's February 5 concert in Grand Rapids, Michigan — a zombie-like rendition of the usually upbeat "These Boots Are Made for Walkin'" — it was clear something was wrong. "It was like she didn't want to be on stage," Chris Bilek, one of the 9,000 fans who watched her open for Rascal Flatts in the Van Andel Arena, tells *Us*. Things got worse during her breakout song "With You," when Simpson just stopped singing and let the backup singers take over the lead vocals while she went to take a drink of water. Pacing the stage in her modified Daisy Dukes and cowboy boots, Simpson fiddled with her earpiece, fumbled her lyrics repeatedly and at one point asked her band to start over from the top.

Finally, she turned her back to the audience as she fought tears and muttered in a low voice her mic barely picked up, "Dear God, help me get through this," then added, louder, "You guys probably heard that. I have a weak voice and I'm feeling vulnerable tonight." Twice Simpson was seen on the giant video monitors mouthing "I'm sorry," and then at the end of her 35-minute set, she dedicated "Do You Know" to her sister, Ashlee Simpson-Wentz, who, she told the crowd, gave her strength, "especially when I feel like walking off the stage. Like tonight."

The bizarre meltdown was just the latest in a trying start to 2009 for Simpson. The close and often cruel scrutiny of her recent weight gain might seem like an obvious source of stress for the singer. But sources say her battles with food are

## Why Women Eat Emotionally

If Simpson has been finding comfort in food, she's got company, says Judith Beck, author of *The Complete Beck Diet for Life*. "Eating distracts you from your negative emotion and offers a temporary fix," Beck tells *Us* of emotional eaters caught in the cycle. "But now they have two problems: the original one, and also feeling badly about gaining weight. They tend to again look to food to comfort themselves."



The 5-foot-3 Simpson weighed an estimated 135 pounds on Jan. 25.

"Tony constantly threatens to break up with her," an insider tells *Us* of the Dallas Cowboy (in L.A. Jan. 17).



# tdown

